



THE RITZ-CARLTON  
YACHT COLLECTION

INTRODUCING

# THE RITZ-CARLTON YACHT COLLECTION

---

JUNE 2020



# MEET OUR SALES TEAM



**DOUGLAS PROTHERO**

CEO

+1 305.458.2646

[douglas.prothero@ritz-carltonyachtcollection.com](mailto:douglas.prothero@ritz-carltonyachtcollection.com)



**ANGELA COMPOSTO**

SVP, Sales & Marketing

+1 954.850.5827

[angela.composto@ritz-carltonyachtcollection.com](mailto:angela.composto@ritz-carltonyachtcollection.com)



**DAVID FREDERICKS**

Director,  
Business Development  
+1 954.998.8481

[david.fredericks@ritz-carltonyachtcollection.com](mailto:david.fredericks@ritz-carltonyachtcollection.com)



**ANDREA BRENES**

Operations Specialist  
+1 786.358.6835

[andrea.brenes@ritz-carltonyachtcollection.com](mailto:andrea.brenes@ritz-carltonyachtcollection.com)



**TOMÁS BACA-CRUZ**

Inside Sales Specialist  
+1 786.204.1115

[tomas.bacacruz@ritz-carltonyachtcollection.com](mailto:tomas.bacacruz@ritz-carltonyachtcollection.com)

# YACHT SPECIFICATIONS



624

FEET  
(190 METERS)

26,500

TONS

149

SUITES

298

GUESTS

246

CREW

1 to 1.21

CREW : GUEST  
RATIO

1 to 88.9

GUEST : SPACE  
RATIO

# INTRODUCING EVRIMA



SETTING SAIL APRIL 2021

MEANING: DISCOVERY; ORIGIN: GREEK

Evrima inspires travelers to immerse themselves in exceptional experiences, explore new destinations and foster the spirit of adventure

# BRAND VALUE



THE RITZ-CARLTON

The Ritz-Carlton inspires life's most meaningful journeys.

- AWARD-WINNING LUXURY HOTEL BRAND
- STRONG BRAND RECOGNITION GLOBALLY
- HOSPITALITY AT A GOLD STANDARD
- LEGENDARY PERSONALIZED SERVICE

# SERVICE



## SERVICE AT A GOLD STANDARD

Legendary service provided by the Ladies and Gentlemen of The Ritz-Carlton, with almost one crew member for every guest

- WARM
- SINCERE
- PERSONALIZED
- ANTICIPATORY

# ONE OF THE HIGHEST SPACE RATIOS AT SEA

- Measuring 624 feet in length and accommodating no more than 298 guests, *Evrima* has one of the highest space ratios in luxury cruise, with **88.9 square feet of space per guest**.

CRUISE LINE	SHIP(S)	LENGTH (FT)	LENGTH (M)	TONNAGE	GUESTS	CREW	CREW TO GUEST RATIO	GUEST TO SPACE RATIO
RCYC	<i>Evrima</i>	624	190	26,500	298	246	1 to 1.21	1 to 88.9
REGENT	<i>Seven Seas Splendor, Explorer</i>	735	224	55,254	750	542	1 to 1.38	1 to 73.7
CRYSTAL	<i>Crystal Serenity</i>	820	250	68,870	980	655	1 to 1.50	1 to 70.3
SILVERSEA	<i>Silver Muse</i>	698	213	40,700	596	411	1 to 1.45	1 to 68.3
SEABOURN	<i>Seabourn Encore, Ovation</i>	690	210	40,350	600	450	1 to 1.33	1 to 67.3

*The guest to space ratio divides the amount of ship space (gross registered tonnage) by the number guests. The higher the space ratio, the more space per person.*

# THE EXPERIENCE

Designed to combine the luxury lifestyle of The Ritz-Carlton with the casual freedom of a yachting vacation, The Ritz-Carlton Yacht Collection will offer itineraries at a relaxed pace and introduce guests to the local cultures of each destination through curated immersive experiences ashore.

ALL-INCLUSIVE VALUE

PERSONALIZED SERVICE OF  
THE RITZ-CARLTON®

MULTIPLE DINING  
EXPERIENCES, 24-HOUR IN-  
SUITE DINING, PLUS  
SPECIALTY DINING

ALL-SUITE  
ACCOMMODATIONS, EACH  
WITH PRIVATE TERRACE

UNIQUE MARINA-STYLE  
PLATFORM, DIRECT ACCESS  
TO WATER

VARIETY OF SOCIAL SPACES  
FOR RECEPTIONS &  
ENTERTAINMENT

RELAXED YACHTING PACE,  
OVERNIGHTS & DAYTIME  
PORTS OF CALL

CURATED, IMMERSIVE  
DESTINATION EXPERIENCES  
ASHORE

# ALL-INCLUSIVE VALUE



- LUXURY ALL-SUITE ACCOMMODATIONS
- MULTIPLE DINING EXPERIENCES, INCLUDING 24-HOUR IN-SUITE DINING
- BEVERAGES IN-SUITE AND THROUGHOUT THE YACHT
- ONBOARD ACTIVITIES AND ENTERTAINMENT
- ONBOARD GRATUITIES
- WI-FI

# DINING EXPERIENCES

## OPEN SEATING

*Included*

## MISTRAL



## TALAAAT NAM



## THE POOL HOUSE



## THE EVRIMA ROOM



## LIGHT BITES

*Included*

## THE BAR



## THE LIVING ROOM



## THE MARINA TERRACE



## SPECIALTY\*

*\*additional fee,  
reservations required*

## S.E.A.



## DINING PRIVÉE



## 24-HOUR IN-SUITE DINING























# OUR SUITES

- 149 SUITES, EACH WITH PRIVATE OCEANVIEW TERRACE
- HIGHEST PERCENTAGE OF LARGER SUITES IN LUXURY CRUISING
- TWO OWNER'S SUITES, EACH WITH PRIVATE WHIRLPOOL
- LOFTS AND COMBINABLE SUITES WITH FLEXIBLE CONFIGURATION
- SUPERIOR GUEST AMENITIES



# SUITE AMENITIES AND FEATURES

Wake up every morning relaxed and carefree, from one of our 149 expertly appointed suites. Designed to combine the modern elegance of The Ritz-Carlton with the casual luxury of the world's most magnificent super yachts, our suites set a new standard for luxury travel.

PRIVATE OCEANVIEW  
TERRACE

DOUBLE VANITY  
BATHROOMS

ESPRESSO MACHINE  
WITH COMPLIMENTARY  
COFFEES AND TEAS

24-HOUR IN-SUITE  
DINING

COMPLIMENTARY WI-FI

LUXURIOUS CUSTOM  
KING BED SYSTEM AND  
LINENS

MINI-BAR PROVISIONED  
TO GUESTS'  
PREFERENCES

COMPLIMENTARY  
BOTTLE OF CHAMPAGNE  
UPON ARRIVAL

INDIVIDUAL ROBE AND  
SLIPPERS

ACCESS TO A PERSONAL  
CONCIERGE IN ALL SUITE  
CATEGORIES

THE OWNER'S SUITE

1098 SQ FT/102 SQ M

TERRACE 592 SQ FT/55 SQ M



THE VIEW SUITE

SUITES 732-733

571 SQ FT/53 SQ M

PLUS TERRACE 86 SQ FT/8 SQ M

SUITES 734-735

624 SQ FT/58 SQ M

PLUS TERRACE 97 SQ FT/9 SQ M





THE LOFT SUITE

700 SQ FT/65 SQ M  
PLUS TERRACE 76 SQ FT/7 SQ M





# THE GRAND SUITE

635 SQ FT/59 SQ M  
PLUS TERRACE 108 SQ FT/10 SQ M



THE SIGNATURE SUITE

474 SQ FT/44 SQ M  
PLUS TERRACE 101 SQ FT/9 SQ M





# THE TERRACE SUITE

THE TERRACE SUITE  
312 SQ FT/29 SQ M  
PLUS TERRACE 67 SQ FT/6 SQ M



# CONNECTING AND CONVERTIBLE SUITES

All suites are designed for two guests, but many can be connected to satisfy the needs of families or to appeal to meeting planners. An innovative system offers the flexibility to transform connecting suites into larger spaces by removing a panel of the wall.

All connecting suites will include:

- Expanded private terrace
- Two luxury custom king bed sleep systems
- Two in-suite safes
- Two double vanity bathrooms, each with a modern shower system
- Two digital flat screen televisions



Terrace-to-Signature (convertible)



Terrace-to-Terrace (convertible)

# CONNECTING AND CONVERTIBLE SUITES

## INNOVATIVE WALL SYSTEM

Flexible configuration options allow connecting suites to expand to satisfy the needs of families to appeal to meeting planners seeking to provide similar accommodations for their top performers

The opening measures 7.2 feet wide by 7.2 feet high (2.2 meters wide by 2.2 meters high)

## CONNECTING SUITES

Of the 149 suites on board, the connecting suites total 43 single-suite configurations. If all connecting suites are utilized as single-suite configurations, inventory reduces to 106 suites.

Select Terrace Suites (18 total) are convertible suites that can be configured as an extended living and dining area or remain a second bedroom when connected to the adjacent suite

3 combinations of suites are available for connecting suites:

Terrace-to-Terrace: 24 total (12 Convertible)

Terrace-to-Signature: 7 total (3 Convertible)

Terrace-to-Grand: 12 total (3 Convertible)

# THE MARINA

MULTI-FUNCTIONAL PLATFORM

DIRECT ACCESS TO THE WATER FROM DECK 3

COMPLIMENTARY WATERSPORTS DURING  
PORT DAYS WHILE AT ANCHOR\*

- PADDLEBOARDS
- WINDSURF BOARDS
- KAYAKS
- SAILBOATS
- SNORKELING ACCESSORIES

*\*Weather and local authorities permitting*





# PUBLIC SPACES

THE POOL  
DECK 5

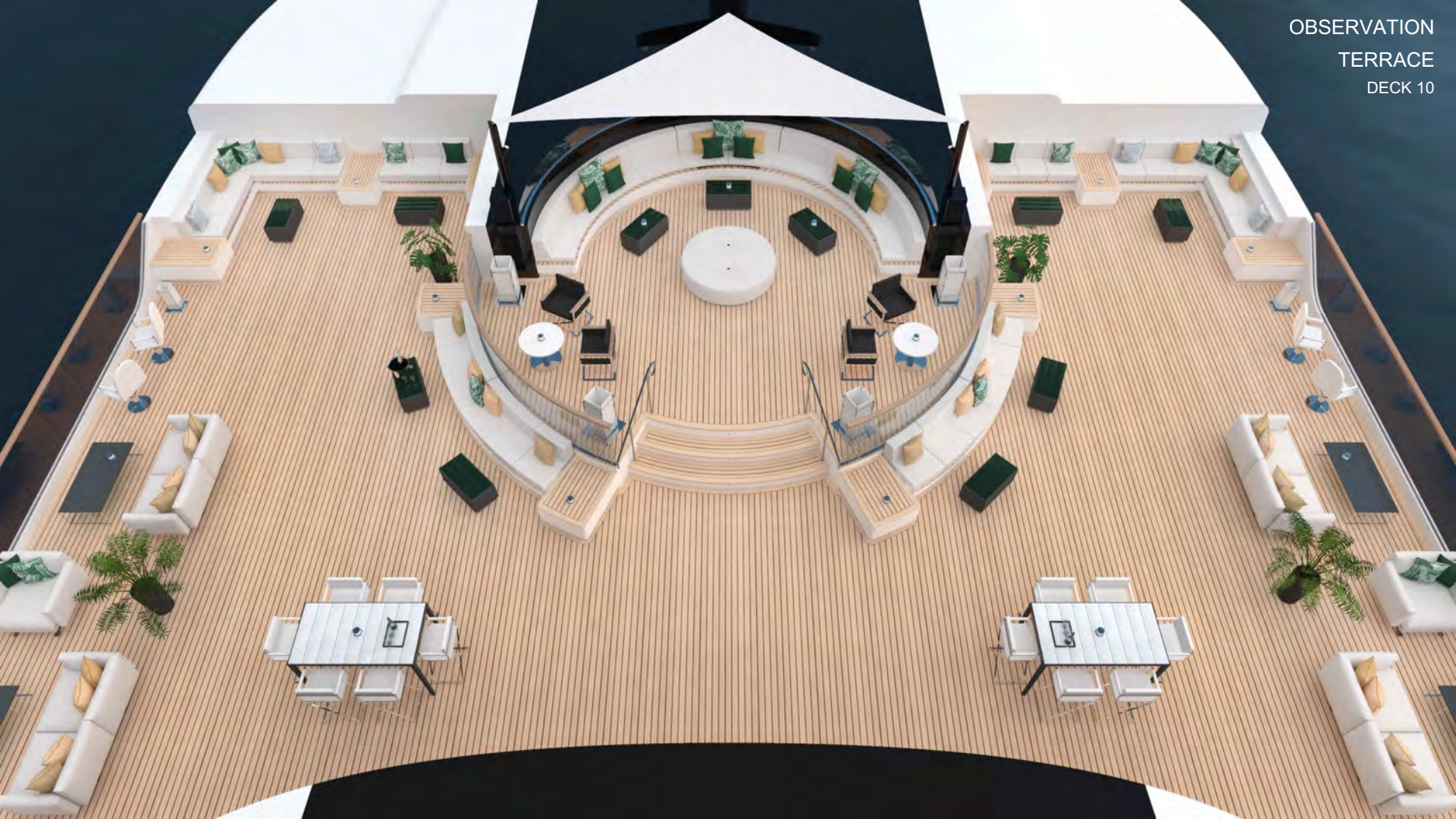


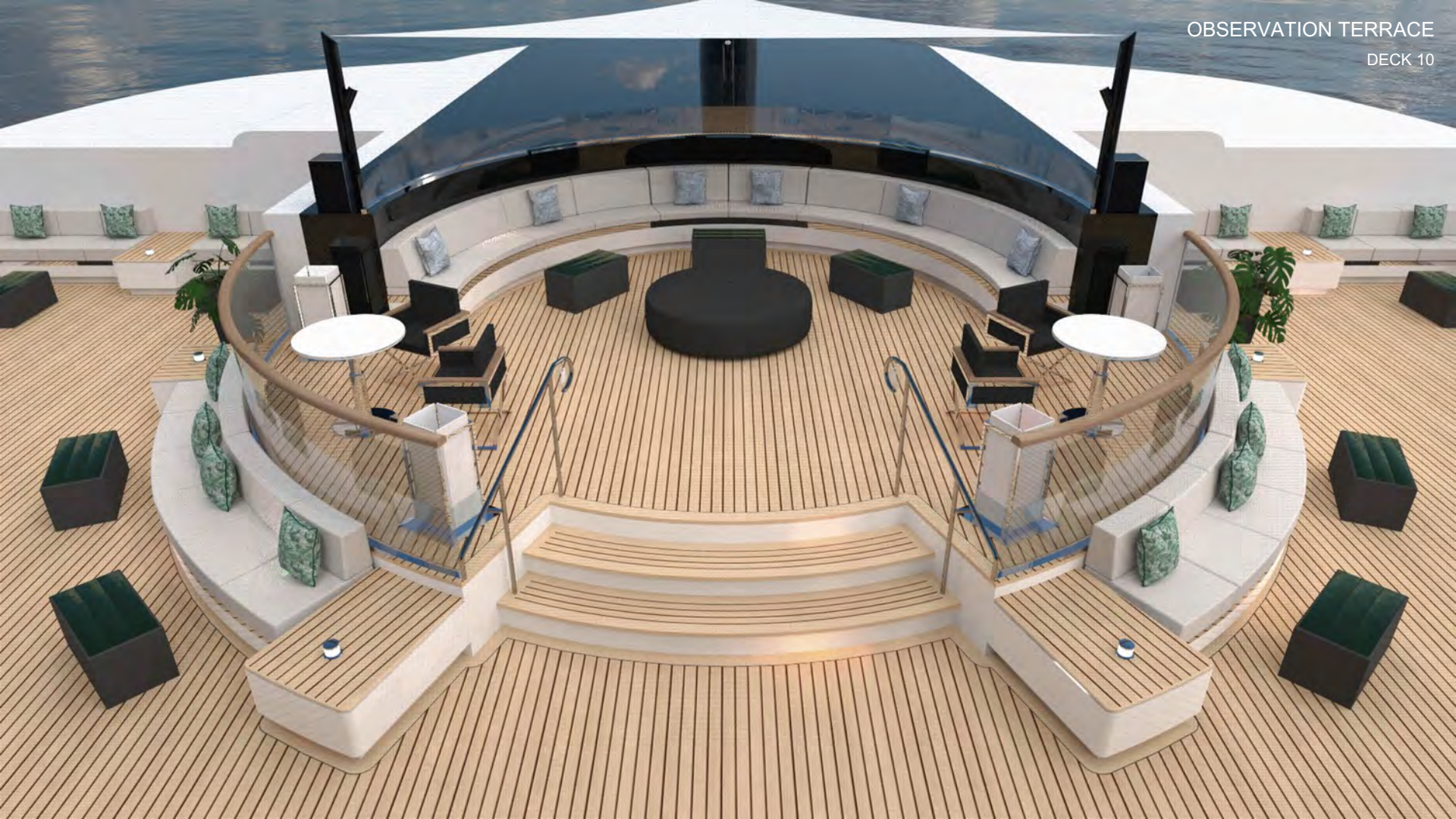
- INTIMATE, RELAXED, CASUALLY ELEGANT ATMOSPHERE
- INTUITIVE, RESIDENTIAL FEEL
- LOUNGE AND BAR OFFER A VARIETY OF ENTERTAINMENT EXPERIENCES
- ACTIVELY SOCIALIZE OR ENJOY PRIVACY
- PEACEFUL RETREAT BY DAY, SOCIAL SCENE BY NIGHT





OBSERVATION  
TERRACE  
DECK 10













# SPA AND WELLNESS

- SPA DESIGNED AND OPERATED BY THE RITZ-CARLTON®
- INDOOR AND OUTDOOR TREATMENT ROOMS AND RELAXATION AREAS
- BEAUTY LOUNGE AND GENTLEMEN'S GROOMING SALON
- TECHNOGYM EQUIPMENT
- GROUP EXERCISE CLASSES
- PERSONAL TRAINING
- FITNESS ON DEMAND



# THE RITZ-CARLTON SPA® OFFERINGS

Guests can escape to their on personal oasis at The Ritz-Carlton Spa to indulge in the scents and delights from around the world while enjoying a relaxing massage or a nourishing facial.

## SPA SERVICES:

- Massages
- Facials (for both ladies and gentlemen)
- Skin Treatments
- Salon Services
- Barber Services



An indulgence in a moment,  
a moment of connection or solitude,  
an awakening or an escape: the spa  
experience offers something  
different for everyone. The Spa  
experience aboard The Ritz-Carlton  
Yacht Collection makes you feel indulged,  
it leaves you feeling from around the  
world. Inspired by the destinations we  
visit and committed to lift your health,  
our treatments awaken the senses,  
refresh the body and restore the spirit.  
At the spa, they'll work with you to  
create an experience about your needs of sea.

## Spa Menu

  
THE RITZ-CARLTON  
YACHT COLLECTION

SPA

# GYM OFFERINGS

In addition to the spa, the onboard Fitness Center is home to a health and wellness program integrating fitness and spa with lectures and nutrition that can be customized to fit guests' needs.

## FITNESS CENTER OFFERINGS:

- Personal Training
- Group Exercise Classes
- Private or Group Yoga Classes
- Fitness on Demand Access

















# RITZ KIDS®

- FAMILIES EXPLORING THE WORLD TOGETHER ARE WELCOME ABOARD
- DEDICATED SPACE ON BOARD FOR CHILDREN AGES 4 TO 12
- ENHANCED SERVICES AVAILABLE DURING HOLIDAYS AND SUMMER MONTHS

MORNING SESSION: 9:00AM – 12:00PM \$45

AFTERNOON SESSION: 1:00PM – 4:00PM \$45

EVENING SESSION: 6:00PM – 9:00PM \$65



# RITZ KIDS® PROGRAMMING



The Ritz Kids program is geared toward children from ages 4 to 12. Four key pillars are designed to inspire natural curiosity and creativity and to engage their senses.

**OCEANS & MARINE LIFE:** Examining our relationship with water and marine life while enlivening a natural curiosity into the underwater world of sea creatures

Sample activities: Water Cycle Craft, Create a Creature

**DESTINATIONS AND THEIR CULTURES:** Celebrating the cultures from around the world through art, music, theatre and play

Sample activities: Culture and Clay, Mystery Detective

**OCEAN STEWARDSHIP AND SAILING:** Shining a light on traditional and modern sailing practices including navigation, marine communication and ship stability

Sample activities: Destination Navigation Chart, Ropes and Knots

**ENVIRONMENTAL RESPONSIBILITY:** Promoting our role in the health of our planet for the future including sustainability, resource consumption and protecting our ecosystem

Sample activities: Water Sampling Science Experiment, Yacht Sustainability Systems

# RELAXED PACE



- MORE OVERNIGHTS IN PORTS OF CALL
- MOST VOYAGES RANGE 7-10 NIGHTS
- ABILITY TO COMBINE BACK-TO-BACK VOYAGES WITHOUT REPEATING PORTS
- INTIMATE SIZE ALLOWS ACCESS TO COVETED YACHTING DESTINATIONS

# THE SHORE COLLECTION



CURATED IMMERSIVE EXPERIENCES TO  
SUIT VARIOUS INTERESTS & ACTIVITY  
LEVELS

- ICONIC SIGHTS
- STIRRING THE SENSES
- CULTURAL CONNECTIONS
- ACTIVE EXPLORATIONS
- EPICUREAN EXPERIENCES

CONCIERGE ASHORE FOR CUSTOM  
ARRANGEMENTS OR PRIVATE EXCURSIONS

# ENTERTAINMENT AND ENRICHMENT

- Led by the Entertainment & Enrichment Director, onboard entertainment staff will feature in-house quartet comprised of one pianist, one vocalist, one guitarist and one drum/sax musician.
- Partnerships with the local arts and music communities and discussions led by renowned experts and lecturers will bring local culture from shoreside to onboard.
- A detailed activities program will feature elements such as classic movies, themed dinners with curated entertainment and lectures and an educational and engaging Ritz Kids® children's program.
- A global network of world-renowned entertainers and enrichment artists will join the yacht for specific sailings to suit the regions being visited.



# SPECIAL OCCASION PACKAGES

## **WEDDINGS AND VOW RENEWALS** - \$900 PER COUPLE / \$450 PER GUEST

Our Wedding and Vow Renewal package allows guests to celebrate their special day with loved ones while onboard, with a ceremony officiated by the captain\* and pre- and post- ceremony reception and toast.

This package includes lunch or dinner at our Michelin-inspired specialty restaurant or in our Dining Privéé, bouquets and boutonnieres for the bridal party, live music and a personalized cake.

## **CELEBRATIONS** - \$950 PER COUPLE

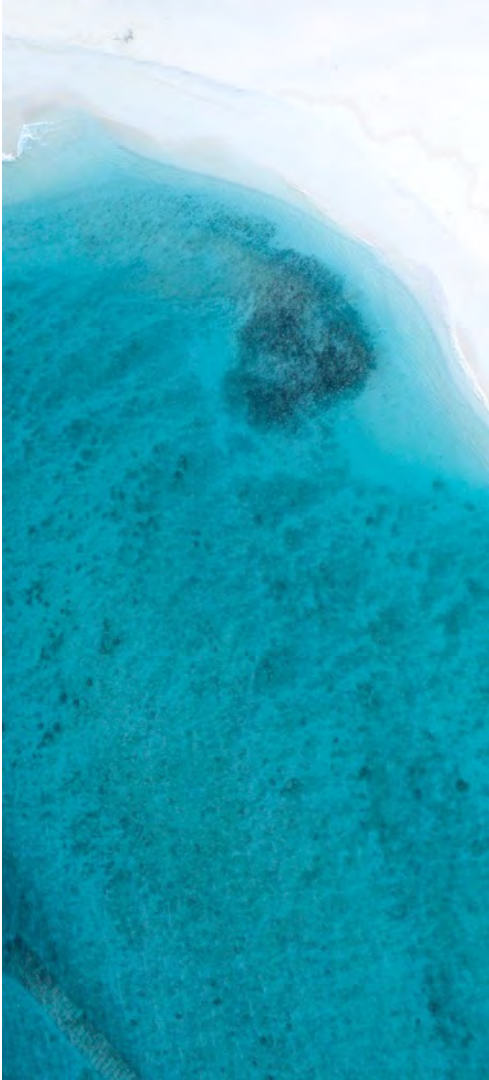
Couples traveling with us who are celebrating a special occasion such as an anniversary or honeymoon may purchase our Celebrations package which includes a bottle of champagne, special turndown amenities, a couple's massage at the onboard spa, and their choice of Epicurean Experience from The Shore Collection.

Packages can be booked 134 days prior to sailing.

For more information, please email [special.services@ritz-carltonyachtcollection.com](mailto:special.services@ritz-carltonyachtcollection.com)

*\*The Ritz-Carlton Yacht Collection does not perform legally binding ceremonies on board.  
It is recommended for couples to hold a civil ceremony to ensure they meet local marriage law requirements.*





# ITINERARIES

# 2021 SEASON



## CANADA & NEW ENGLAND

SEP – OCT 2021



## CARIBBEAN

NOV – DEC 2021

ATLANTIC  
OCEAN



## MEDITERRANEAN

APR – SEP 2021

### 2021 SEASON HIGHLIGHTS:

- ADRIATIC COAST
- FRENCH RIVIERA
- GREEK ISLES
- BALEARIC ISLANDS
- LIGURIAN COAST
- CANADA AND NEW ENGLAND
- CARIBBEAN

# 2021 VOYAGE CALENDAR

## MEDITERRANEAN

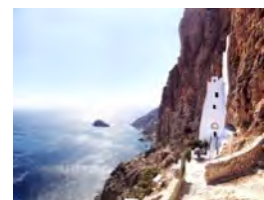
DATE	NIGHTS	ITINERARY	
APR 22	9	LISBON TO PALMA DE MALLORCA	
MAY 1	7	PALMA DE MALLORCA TO NICE	
MAY 8	7	NICE TO ROME	
MAY 15	6	ROME TO MARSEILLE	
MAY 21	8	MARSEILLE TO VALLETTA	
MAY 29	7	VALLETTA TO ATHENS	
JUN 5	7	ATHENS TO ATHENS	WAITLIST
JUN 12	7	ATHENS TO VENICE	WAITLIST
JUN 19	5	VENICE TO DUBROVNIK	
JUN 24	9	DUBROVNIK TO ATHENS	
JUL 3	7	ATHENS TO ATHENS	
JUL 10	7	ATHENS TO DUBROVNIK	
JUL 17	7	DUBROVNIK TO VENICE	
JUL 24	7	VENICE TO ATHENS	
JUL 31	7	ATHENS TO VALLETTA	
AUG 7	7	VALLETTA TO ROME	
AUG 14	7	ROME TO ROME	
AUG 26	8	ROME TO MÁLAGA	
SEP 3	7	MÁLAGA TO LISBON	

## CARIBBEAN

DATE	NIGHTS	ITINERARY
NOV 17	7	ST. LUCIA TO ARUBA
NOV 24	8	ARUBA TO ARUBA
DEC 2	7	ARUBA TO BARBADOS
DEC 9	7	BARBADOS TO BARBADOS
DEC 16	7	BARBADOS TO SAN JUAN
DEC 23	10	SAN JUAN TO SAN JUAN

## CANADA & NEW ENGLAND

DATE	NIGHTS	ITINERARY
SEP 10	12	LISBON TO HALIFAX
SEP 22	7	HALIFAX TO BOSTON
SEP 29	11	BOSTON TO MONTRÉAL
OCT 10	12	MONTRÉAL TO HALIFAX
OCT 22	12	HALIFAX TO FORT LAUDERDALE



# 2022 SEASON

## 2022 SEASON HIGHLIGHTS:

- WINDWARD ISLANDS
- AMALFI COAST
- AZORES
- BALEARIC ISLANDS
- ADRIATIC COAST
- GREEK ISLES
- CARIBBEAN ISLANDS



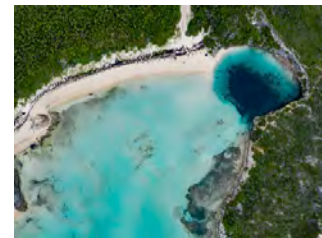
# 2022 VOYAGE CALENDAR

## CARIBBEAN

DATE	NIGHTS	ITINERARY
JAN 2	7	SAN JUAN TO SAN JUAN
JAN 9	7	SAN JUAN TO ST. MAARTEN
JAN 16	7	ST. MAARTEN TO BARBADOS
JAN 23	7	BARBADOS TO BARBADOS
JAN 30	7	BARBADOS TO ST. LUCIA
FEB 6	7	ST. LUCIA TO SAN JUAN
FEB 27	7	ST. MAARTEN TO ST. LUCIA
MAR 11	9	BARBADOS TO ARUBA
MAR 20	8	ARUBA TO ARUBA
MAR 28	12	ARUBA TO FORT LAUDERDALE
APR 9	7	FORT LAUDERDALE TO FORT LAUDERDALE
APR 16	7	FORT LAUDERDALE TO FORT LAUDERDALE
NOV 5	12	LISBON TO BRIDGETOWN

## MEDITERRANEAN

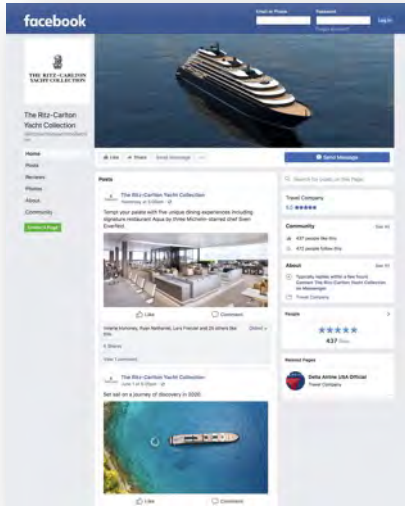
DATE	NIGHTS	ITINERARY
APR 23	13	FORT LAUDERDALE TO LISBON
MAY 6	11	LISBON TO BARCELONA
MAY 17	9	BARCELONA TO MARSEILLE
MAY 26	10	MARSEILLE TO ROME
JUN 10	8	VALLETTA TO ATHENS
JUN 18	7	ATHENS TO ATHENS
JUN 25	7	ATHENS TO VENICE
JUL 2	7	VENICE TO DUBROVNIK
JUL 14	9	VENICE TO ATHENS
JUL 23	7	ATHENS TO VENICE
JUL 30	7	VENICE TO ATHENS
AUG 6	7	ATHENS TO ATHENS
AUG 13	7	ATHENS TO ISTANBUL
AUG 20	11	ISTANBUL TO ATHENS
AUG 31	10	ATHENS TO VENICE
SEP 10	7	VENICE TO ROME
OCT 1	7	ROME TO ROME
OCT 8	7	ROME TO BARCELONA
OCT 29	7	BARCELONA TO LISBON



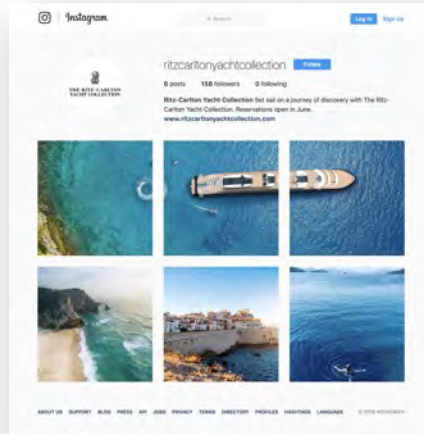
# BOOKING WINDOW OVERVIEW



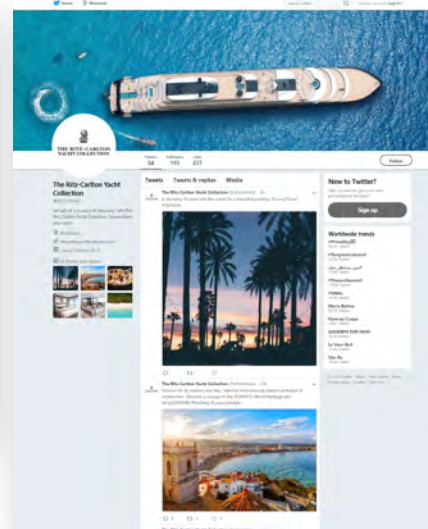
@ritzcarltonyachtcollection



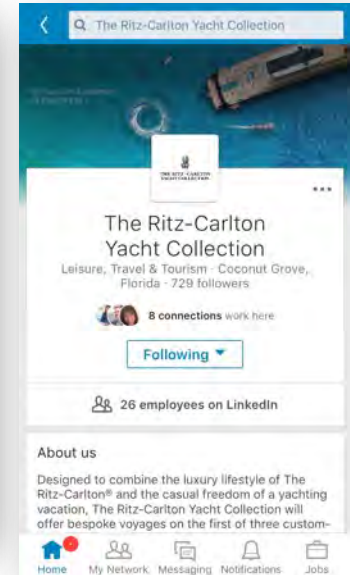
@ritzcarltonyachtcollection



@ritzcarltonyc



The Ritz-Carlton Yacht Collection





THE RITZ-CARLTON  
YACHT COLLECTION



THANK YOU

*Renderings are artistic concepts. All features, plans and specifications are subject to change without notice.*